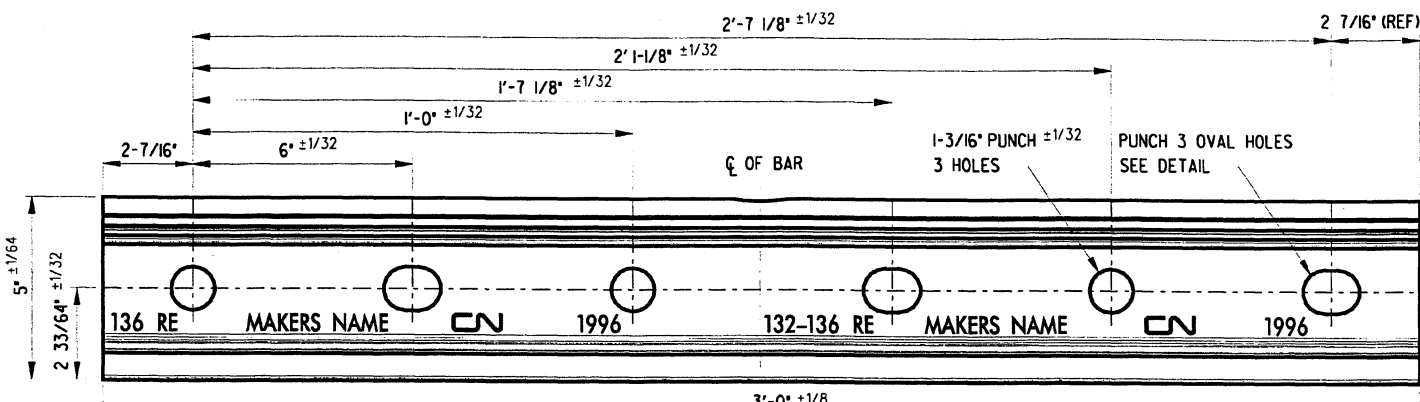
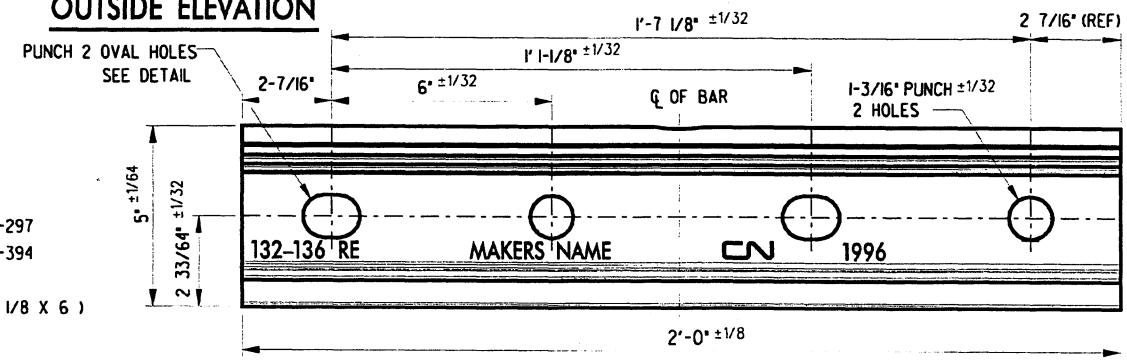


**6 HOLE BAR**  
 STOCK NUMBERS  
 NEW 01-05-296  
 PARTLY WORN 01-05-393  
 (ISSUED AS PAIR)  
 (HOLE SPACING 6 X 6 X 7 1/8 X 6 X 6)



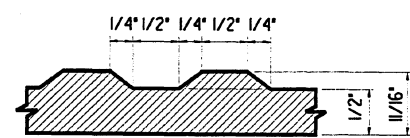
**OUTSIDE ELEVATION**

**4 HOLE BAR**  
 STOCK NUMBERS  
 NEW 01-05-297  
 PARTLY WORN 01-05-394  
 (ISSUED AS PAIR)  
 (HOLE SPACING 6 X 7 1/8 X 6 X 6)

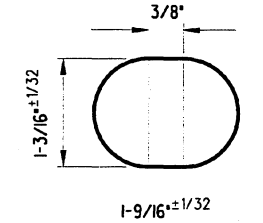


**OUTSIDE ELEVATION**

**TOLERANCE NOTE:**  
 THE SPLICE BARS MUST FIT PERFECTLY WITH THE HEAD, BASE, AND DRILLINGS OF SAMPLE RAIL ENDS WHICH WILL BE SUPPLIED BY THE RAILWAY COMPANY AT THE MANUFACTURER'S REQUEST.



**SECTION A-A**



**OVAL HOLE DETAIL**

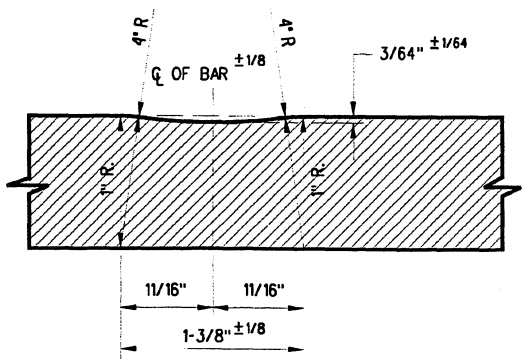
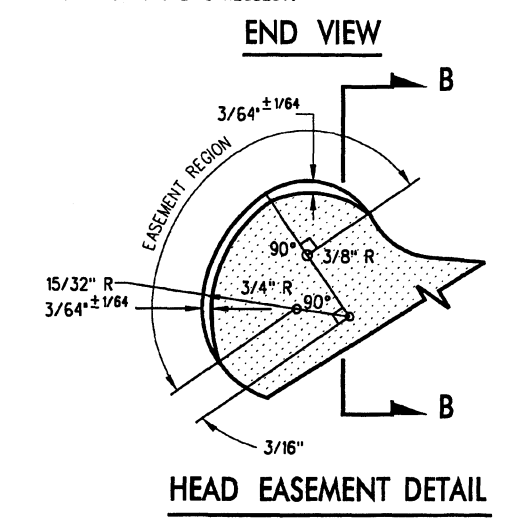
DIMENSIONS AT INSIDE FACE

**NOTES:**

- ALTERNATE OVAL AND ROUND BOLT HOLES SHALL BE PUNCHED IN THE ORDER SHOWN.
- BOLT HOLES SHALL BE PUNCHED FROM THE INSIDE OF SPLICE BAR.
- THE USE OF ACETYLENE TORCH OR OTHER BURNING METHOD FOR THE CUTTING OR MAKING OF HOLES IN THE MANUFACTURE OF SPLICE BARS IS ABSOLUTELY PROHIBITED.
- 3/8" MIN. IDENTIFICATION MARK SHALL BE ROLLED IN RAISED CHARACTERS (1/32" MIN.) ON THE OUTSIDE OF THE BARS.
- EACH FINISHED SPLICE BAR MUST HAVE A TOTAL MARKING SHOWN.

**MATERIAL:**

SPLICE BARS SHALL BE MADE OF BASIC OPEN-HEARTH OR BASIC OXYGEN CARBON STEEL ACCORDING TO THE LATEST REVISION OF C.N.R. SPECIFICATION S3W-5.2 FOR LINES IN CANADA OR S3W-14.1 FOR LINES IN UNITED STATES.



PHYSICAL PROPERTIES OF ONE BAR			
GROSS AREA:	MAXIMUM	5.59	IN <sup>2</sup>
	MINIMUM	5.12	IN <sup>2</sup>
	AVERAGE	5.355	IN <sup>2</sup>
MOMENT OF INERTIA		13.726	IN <sup>4</sup>
SECTION MODULUS:	TOP	5.48	IN <sup>3</sup>
	BOTTOM	5.46	IN <sup>3</sup>
NEUTRAL AXIS:	FROM TOP	2.507	IN
	FROM BOTTOM	2.516	IN
NET WEIGHT OF 6 HOLE BAR		53.27	LBS
NET WEIGHT OF 4 HOLE BAR		35.51	LBS

THIS DRAWING SUPERSEDES DRAWING DATED 30 APR.1973 REVISED MAR.'90

No.	Date	Revision	
<b>Standard Norme</b>		HEAD FREE	
		<b>RAIL SPLICE BAR</b>	
		FOR 132 & 136 LB. R.E. RAILS	
Drawn Dessin	MG	Checked Verification	GGG Approved Approbation
<b>Office of Chief Engineer</b>			
<b>Bureau de l'ingénieur en Chef</b>			
Date	JUL '96	Plan Number Dessin numéro	TS - 1203

DISPONIBLE EN FRANÇAIS

FOR ADDITIONAL INFORMATION E-MAIL "TRACKSTD"